

## Installation Guide

**AQUARIUS** **1. General information on the installation guide**

This installation guide is intended for trained persone.  
For this reason no basic working steps are included.




The seal on the meter must not be damaged!  
A damaged seal will result in immediate invalidation of the factory warranty and verification / conformity.



- For installation, please observe the requirements in EO6 / EN 14154.
- The meter must only be installed in areas free from the risk of frost.
- Please also observe any additional regulations for potable water installations (e.g. DIN 1988).
- Medium: potable water

**2. Scope of supply**

- Base meter **AQUARIUS** 
  - prepared for retrofitting with radio segment IZAR RS
  - or with pulse output
  - or complete with radio segment IZAR RS
- 2 flat gaskets for the screw connection

**3. Installation location**

- Capture all outlets in one system.
- Do not install meters in circulation conduits.
- Install meters at easily accessible points (take read-outs or replacement into consideration).
- Retrofitting with the radio segment IZAR RS requires an additional installation height of 20 mm.
- Maintain a minimum distance of 30 cm between the radio segment IZAR RS and electromagnetic sources of interference such as switches, regulators, pumps, etc.

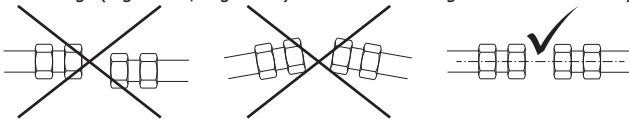
**4. Assembly**

- Install a closing device to the conduit in front of the meter.
- Rinse the conduit thoroughly.
- Shut off the water supply and empty the pipeline.



Take necessary precautions to ensure that any devices connected to the pipeline are not damaged.

- Use 1/2 or 3/4 inch screw connections. Use a reducing sleeve if necessary.
- Protect meters against impacts, shocks or vibrations which could arise at the installation location.
- Protect meters against stress or forces which could be caused by pipes or fittings (e.g. offset, alignment) and use connecting brackets if necessary.



- Remove old seals and clean sealing surfaces - only use the seals provided!
- Install meter- observe the flow direction (arrow indicating the flow on the meter) and medium temperature range!
- For meters with **plastic housing**, do not exceed the maximum torque of **15 - 25 Nm**, as otherwise the meter may be damaged.
- Open outlet.
- Open the closing device in front of the meter **slowly** to prevent any damage to the measurement insert.
- Check function.
- Turn the register to an easy-to-read position.

- Close the outlet and check the system for leaks.
- Seal the connection fitting.
- Reactivate any previously connected devices.

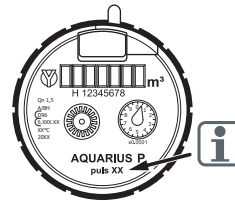


Meters with plastic housing must not be used for tap connections!

**Additional installation instructions for tap connections (e.g. washing machine, garden hose, etc.)**

- Screw the connection fitting with seal to the meter inlet.
- Screw the hose or washing machine connection and seal to the outlet of the meter.

Important: observe the flow direction (arrow indicating the flow on the meter)!

**5. AQUARIUS  pulse output**


Observe the pulse value of the meter!

There are two versions:

- Pulse value 10 l/pulse
- Pulse value 100 l/pulse

Contact load:  
max. 24 V ~ 0.2 A



The **AQUARIUS**  with pulse output is only available „not in conformity with the declaration“.

**6. Transport and storage**

Ensure frost-free storage!  
Water measurement devices are precision devices and must be protected from impact, shock and vibration!

**7. EG Konformitätserklärung  
EC Declaration of conformity**

**DIEHL**  
Metering



**EG-Konformitätserklärung**

**EC Declaration of Conformity**

Diehl Metering GmbH  
Industriestr. 13  
91522 Ansbach  
GERMANY

DMDE-CE 167/1

Wir erklären hiermit, dass das Produkt / We hereby declare that the product

Wasserzähler / water meter  
Type ET1, ET2, ET3, ET4

Handelsname / trade name  
Aquarius Type S, Aquarius Type P,  
domaqua m, vario 3

EG-Baumusterprüfbescheinigung  
EC Type-examination Certificate number  
DE-14-MI001-PTB006

Nummer Benannte Stelle Modul D  
Notified Body number module D  
0102

(Typ entsprechend des Angebotes, der Auftragsbestätigung, der Gerätekenzeichnung;  
Details in Montage- und/oder Bedienungsanleitung) konform ist mit folgenden Richtlinien des  
Europäischen Parlaments und des Rates, soweit diese auf das Produkt Anwendung finden:  
(Type according to the supply, the order confirmation, the equipment identification, Details  
in assembly and/or instruction manual) are concurring with the following guidelines of the  
European Parliament and the Council as far as these apply to the product:


MID-Richtlinie (2004/22/EG)

MID Directive (2004/22/EC)

Das Produkt entspricht ferner den folgenden, angewendeten harmonisierten Normen bzw.  
normativen Dokumenten, Regeln und Technischen Richtlinien (Stand wie angegeben).  
Furthermore the product complies with the following used harmonised standards and  
normative documents, rules and technical guidelines (level as indicated).

OIML R49:2006  
EN14154:2005 + A2:2011  
ISO 4064:2011

Ansbach, 01.10.2014  
Diehl Metering GmbH

  
ppa. R. Zahn  
(Leiter Betrieb)  
(Head of Operations)

  
ppa. Dr. K. Herrmann  
(Leiter Entwicklung)  
(Head of Research & Development)